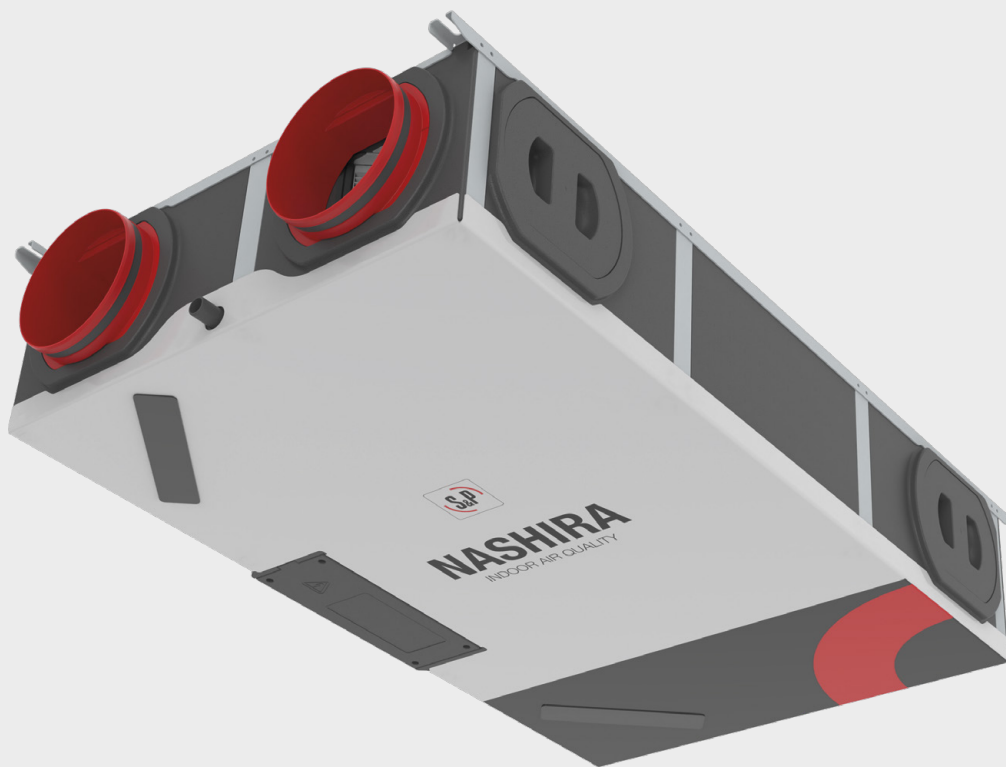




NASHIRA S

Quick start-up guide



FOREWORD

Carefully read this document before using the product.

With this document, you will be able to install and start-up the NASHIRA S heat recovery unit quickly and safely. In this document, the NASHIRA S equipment will be referred to as “the unit”. The unit is subject to continuous improvement, therefore the unit may be slightly different from the descriptions given.

This document does not contain information on installation risks or safety precautions for the use of the unit. For this, refer to the **NASHIRA S Technical Manual**.

1. SUPPLIED COMPONENTS

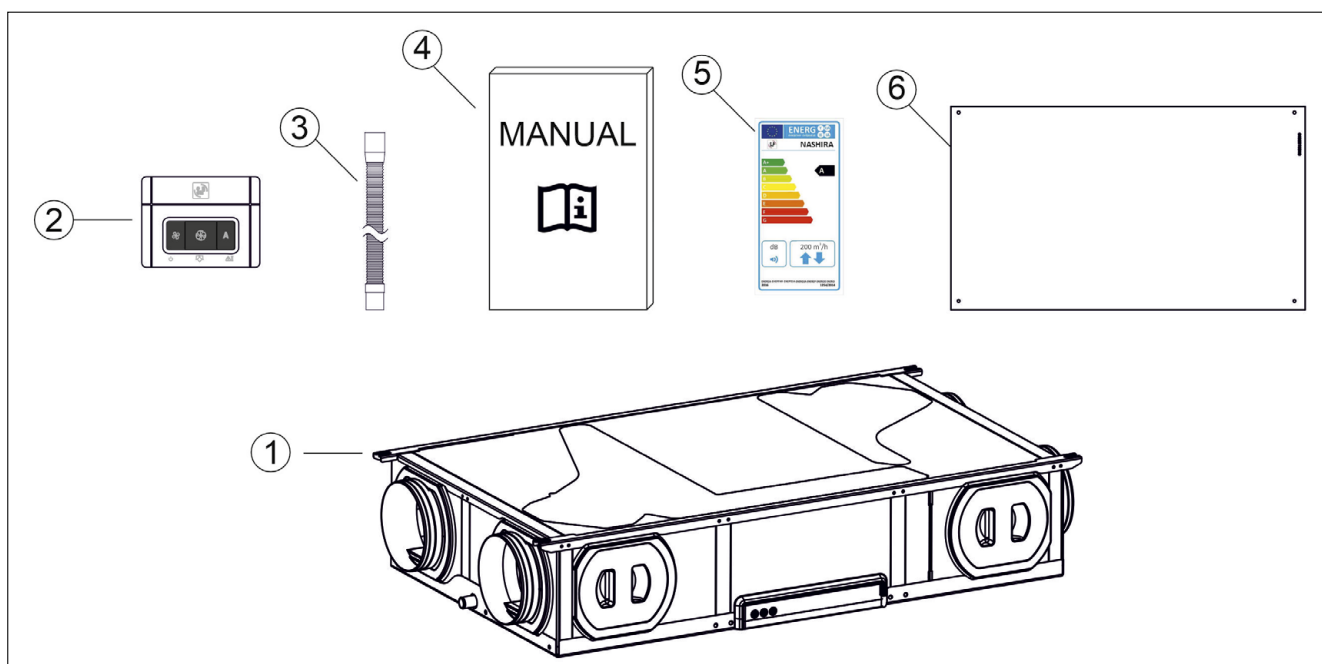


Illustration 1. Supplied components

1. NASHIRA S heat recovery unit
2. Controller
3. Flexible tube, condensate drain connection L = 150 mm. D19 mm
4. Manuals: User, Quick start-up guide
5. Energy label
6. Assembly template

2. INSTALLATION IN SUSPENDED CEILING

WARNING

The unit must be accessible for carrying out any maintenance and repair work. For this reason, if the unit is installed in a suspended ceiling, we recommend an access opening of at least 775 mm x 1300 mm.

<p>1. Ensure that the location where the unit is to be installed meets the following minimum dimensions:</p>	
<p>2. Hold the assembly template (located in the packaging) over the location where the unit is to be installed and make the 4 holes where indicated. Note: Weight of the unit = 28.5 kg</p>	
<p>3. Hang the unit from its 4 supports. Ensure that it is correctly levelled. Use bolts suitable for the weight of the unit (up to 28.5 kg). Do not twist the unit.</p>	

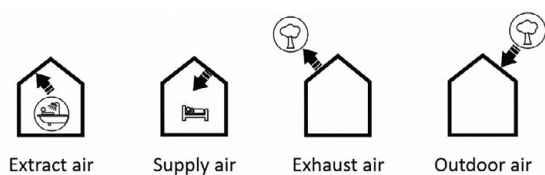
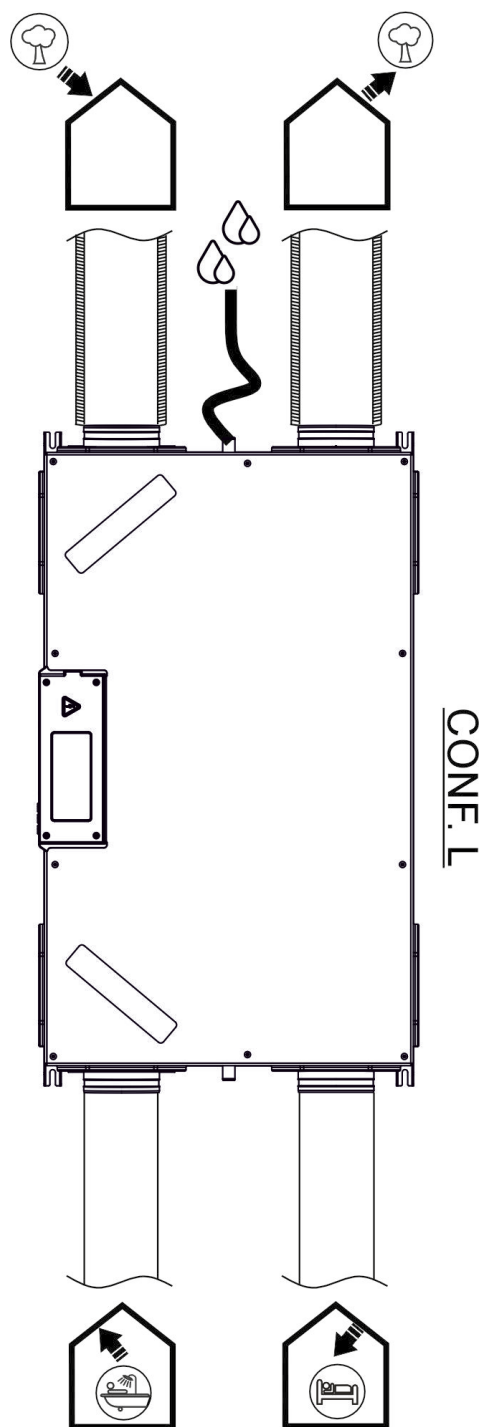
3. DRAIN CONNECTION (CONDENSATE)

<p>1. Connect the condensate siphon as described below. The supplied flexible tube can be used (3)</p> <ul style="list-style-type: none"> • Note 1: The unit is supplied with two condensate outlets and a cap. The unused condensate outlet should remain closed. • Note 2: The units with an enthalpy exchanger do not need a drain. These units are supplied with both condensate outlets closed by default. 	
<p>2. Fill the condensate siphon with a minimum of 100 mm of water. The drainage pipe must be installed with a minimum slope of 1% to ensure good drainage.</p> <ul style="list-style-type: none"> • Note 3: Soler & Palau offers "dry siphon" as an accessory. The dry siphon does not need water. (5800015700 DSI) 	

4. DUCT CONNECTIONS

Connect the ventilation ducts as described below.

- *Note 1: It is essential to use insulated ducts on the outdoor air connections (outdoor air inlet and air exhaust) to prevent the appearance of condensation.*
- *Note 2: In case that supply and extraction ducts pass through non-climate controlled spaces (for example a garage), it is essential to use insulated ducts in these sections to prevent energy losses or the appearance of condensation on the ducts.*





5. ELECTRICAL CONNECTIONS

WARNING

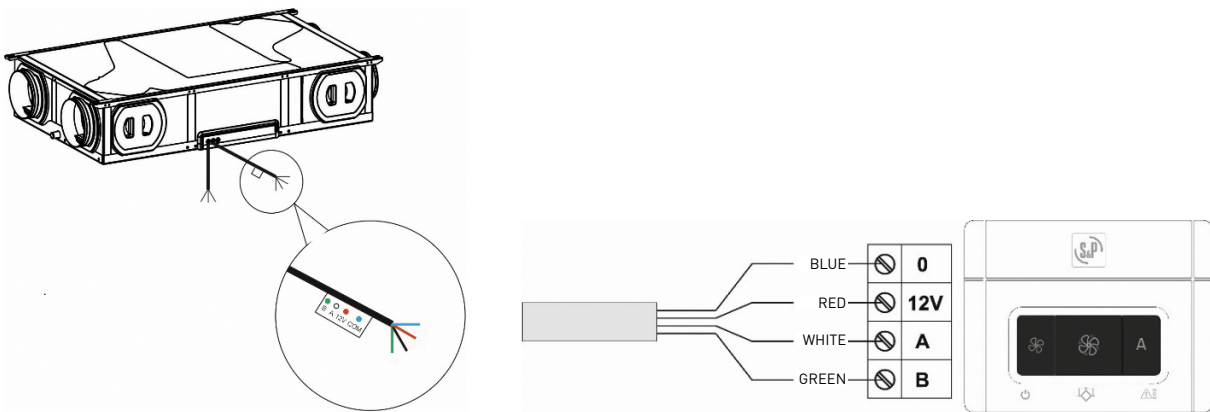
All the openings of the unit must remain sealed, for example, with a protector, until start-up in order to prevent the ingress of dust or moisture into the system.

The unit must only be started once all the installation work has been completed. The system must be inspected (including all the air ducts) for dirt residue or foreign bodies which, if present, must be removed.

All the electrical safety devices must be properly connected, set and operational.

To start up the equipment, only 2 connections are required: Power supply (230V 50Hz) and the Controller connection.

1. At one of the cable glands of the electronic box, you will find a 4 wire cable. Connect this cable to the controller as described below.



2. At one of the cable glands of the electronic box, you will find a Live – Neutral – Earth power supply cable. Make the electrical connection.

6. OPERATION OF THE CONTROLLER

The remote control allows you to switch between 3 speed levels, activate the bypass, activate automatic mode, stop the unit and reset the filter alarm. For more information on the list of alarms, consult the user manual or the technical manual.

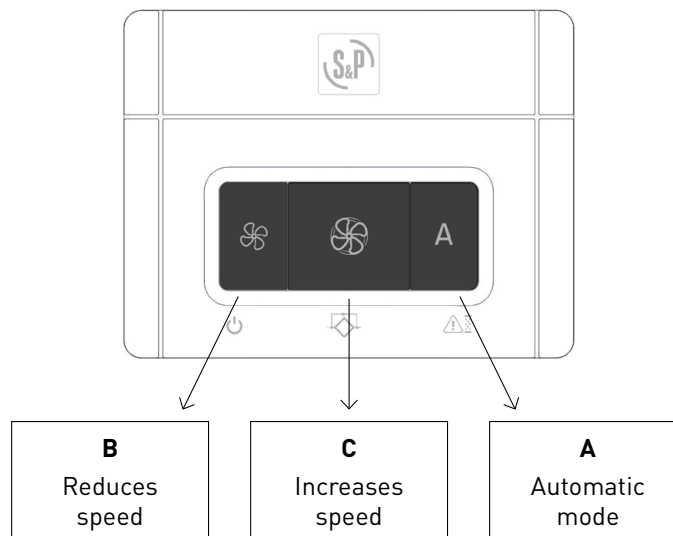


Illustration 2. NASHIRA S controller and button functions

Key	Short press	Long press (3 sec.)	Lighting
A	Activating/deactivating automatic mode*	Resetting filter alarm	ON (green) when automatic mode is active
			FLASHING (red) if there is an alarm
B	Reduce speed	Stops the unit	ON (green) at low speed
			FLASHING (red) when unit OFF
C	Increase speed	Activate the bypass manually	ON (green) at medium/high speed
			FLASHING (green) bypass active

Table 1. NASHIRA S controller button functions

* When automatic mode is active, the unit will proportionally vary its speed depending on the indoor humidity with the aim of achieving the best indoor air quality possible.

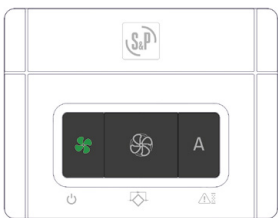
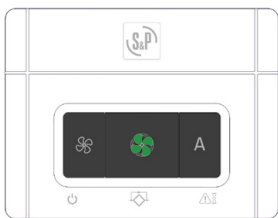
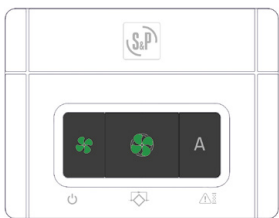

SPEED LEVELS			
			
Low speed	Medium speed	High speed	Automatic mode

Table 2. NASHIRA S speed levels



S&P SISTEMAS DE VENTILACIÓN, S.L.U.

C. Llevant, 4
Polígono Industrial Llevant
08150 Parets del Vallès
Barcelona - Spain

Tel. +34 93 571 93 00
www.solerpalau.com



Ref. 9023133801