

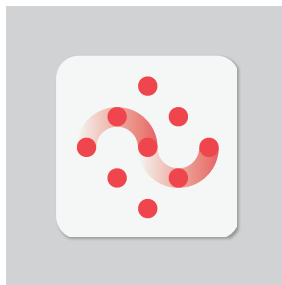
Double flow ventilation unit for single-family houses and apartment buildings, with high-efficiency counterflow heat exchanger (up to 94%), featuring low-consumption, low-noise EC motors. It ensures a comfortable, healthy and energy-efficient indoor climate. Passivhaus certification (ongoing). Through the SPCM communication board, NASHIRA ventilation unit communicates with CONNECTAIR platform, enabling internet-based control. NASHIRA ventilation unit can communicate with your home automation system via Modbus or other protocols via gateway. Its compact design and nozzle configuration ensure optimal performance and swift and flexible installation.

Features

- Counterflow heat exchanger with up to 94% efficiency.
- Modbus and 0-10V connection.
- Constant flow centrifugal fans.
- Reversible and symmetrical L/R.
- Built-in humidity sensors.
- 90° adjustable nozzles.
- Remote control via cable or RF (optional).
- G4 supply/extraction filter (M5, F7, F9 and Activated Carbon filters, optional for supply).
- 100% automatic or manual bypass, with specific bypass airflow adjustment.
- 4 outlets in Ø 160 mm. (NASHIRA S 200) or Ø 125 mm (NASHIRA S 150).
- False ceiling installation.
- Enthalpic version.



Remote control
 included with the product. Allows adjustment of:
 - Speeds.
 - Manual or automatic.
 - Dirty filter alarm.
 - Manual bypass activation.



Connectair
 Through the SPCM Lite M module, the unit can access Connectair, S&P's IoT that offers a new way to enjoy ventilation.

LOW PROFILE	ON GOING	DESIGNED FOR EASY INSTALLATION

Specific applications

CMV single-family dwellings	CMV multi-family dwellings	Heat recovery system

TECHNICAL CHARACTERISTICS

Model	Sensible efficiency ErP (%)	Voltage (V)	Maximum flow rate, at 300 Pa (m ³ /h)	Sound pressure level at 1.5 m Qref - 50 Pa (dB(a))	Maximum power ErP (W)
NASHIRA S 150	92	230	150	33	47
NASHIRA S 200	90	230	200	36	72
NASHIRA S 150 E	88	230	150	33,5	46
NASHIRA S 200 E	85	230	200	36,4	72

CONSUMPTION TABLE

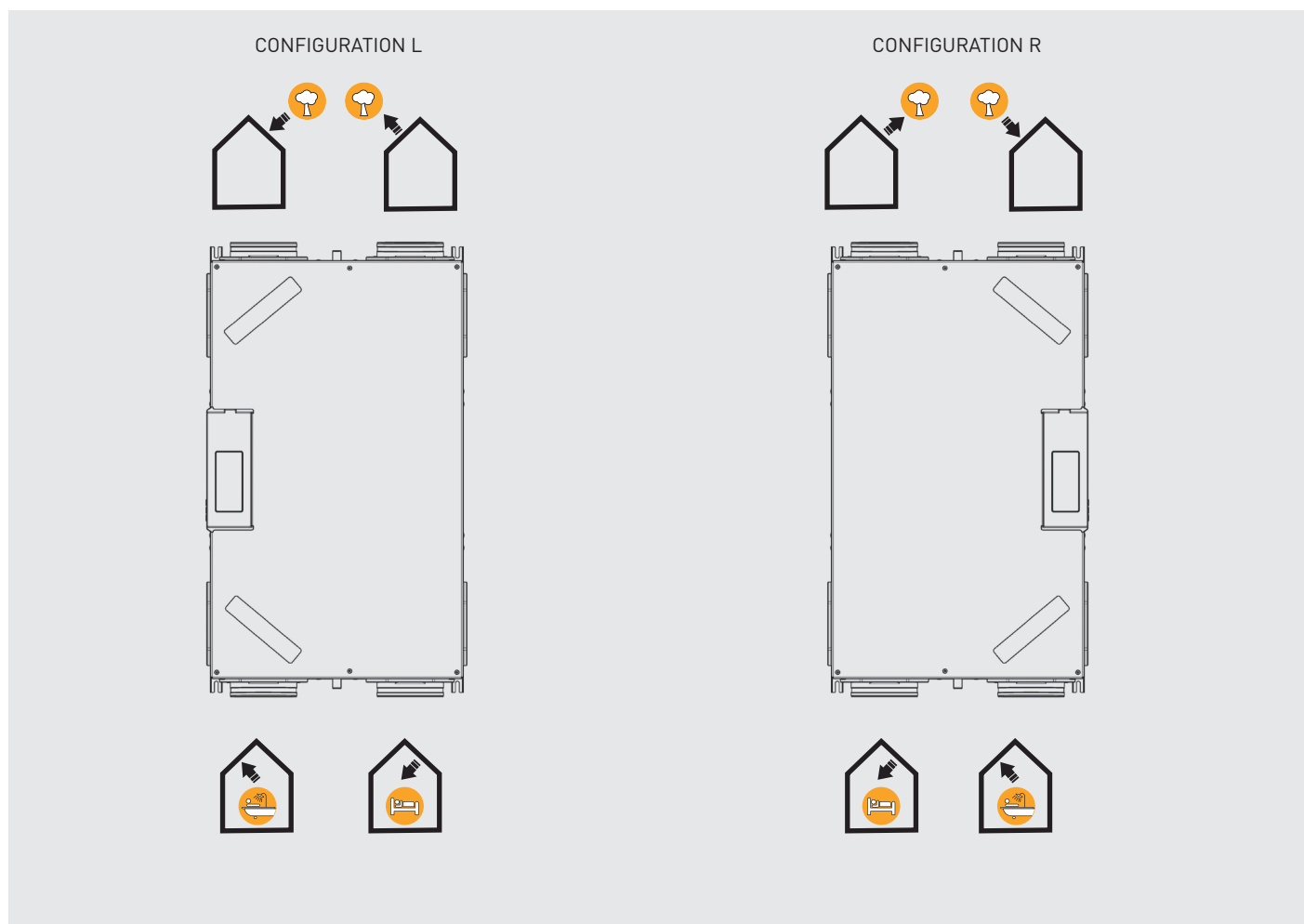
NASHIRA S 150

		q _v (m ³ /h)		
		70	105	150
P _{sf} (Pa)	150	34	43	56
	100	25	34	46
	50	17	22	38

NASHIRA S 200

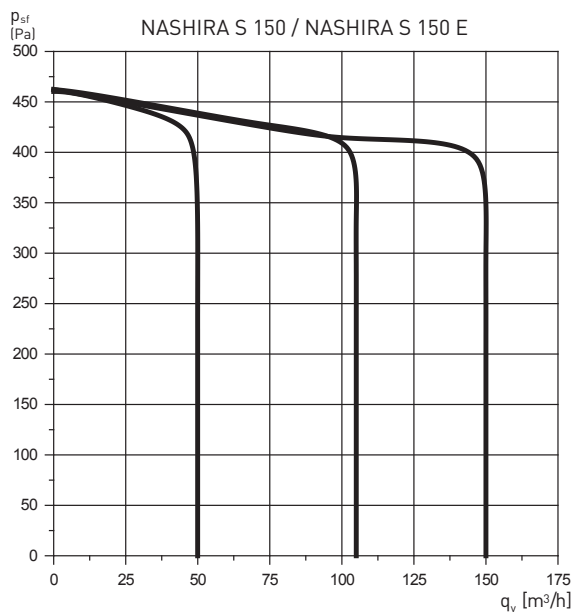
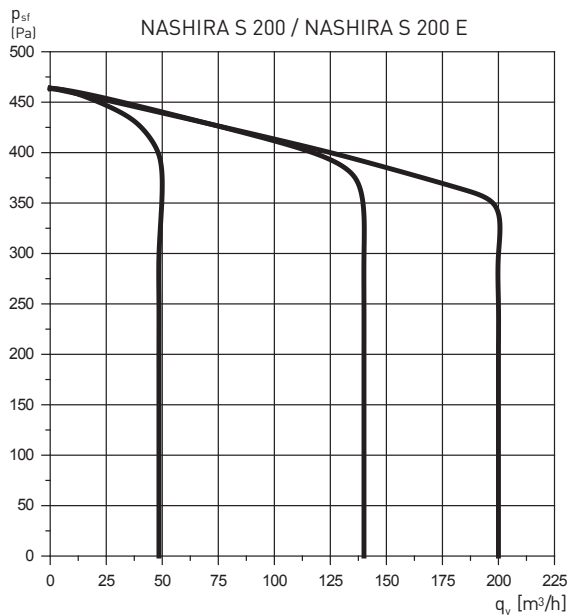
		q _v (m ³ /h)		
		70	145	200
P _{sf} (Pa)	150	34	56	84
	100	25	45	72
	50	17	35	60

AIR FLOW DIRECTIONS



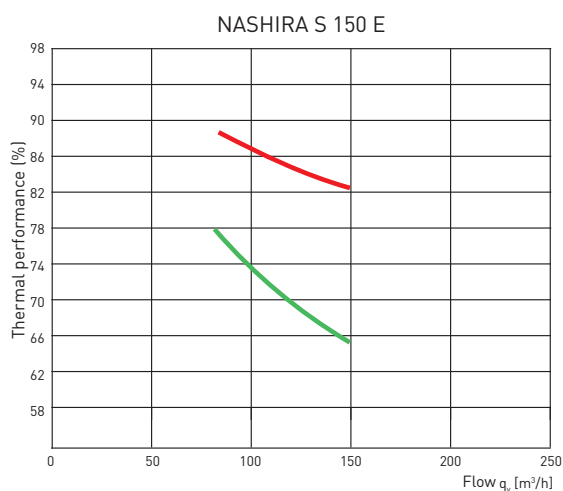
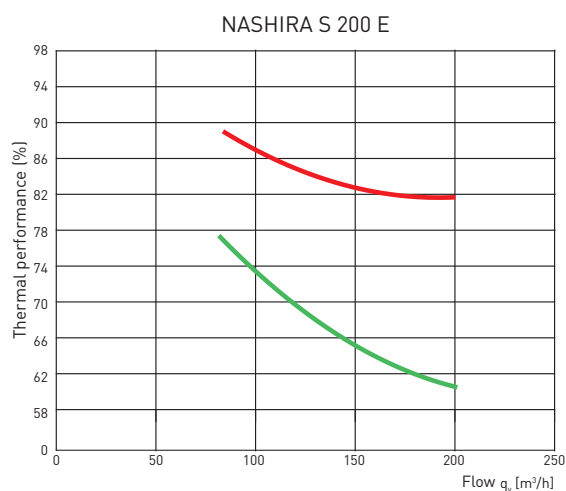
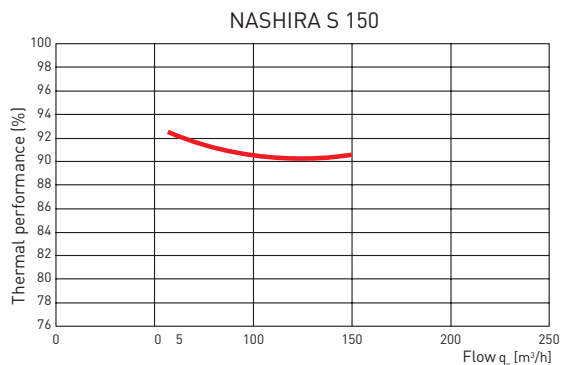
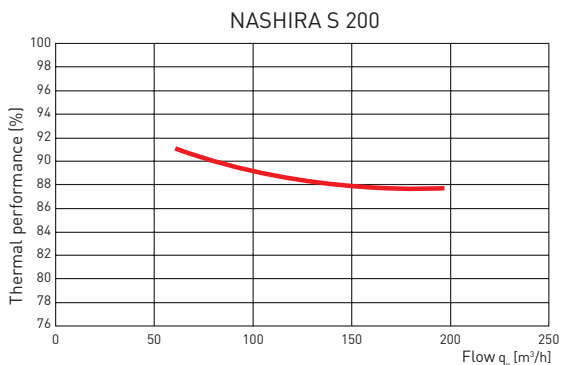
CHARACTERISTIC CURVES

- q_v = Flow rate in m^3/h .
- p_{sf} = Static pressure in Pa.



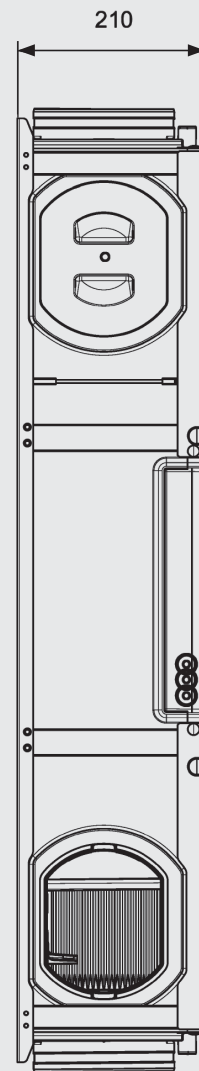
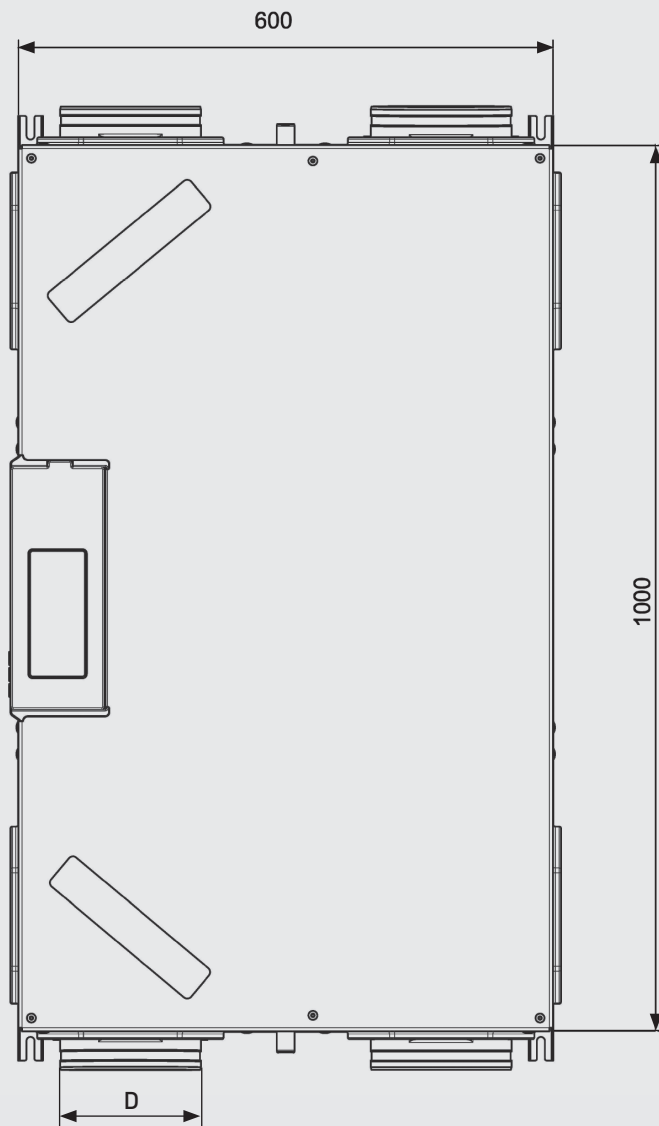
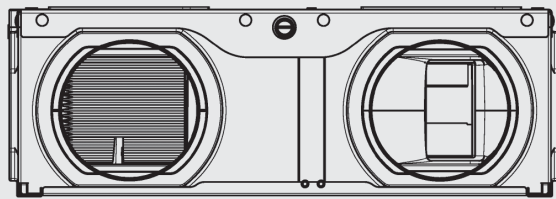
PERFORMANCE CURVE

Performance according to EN 13141-7:2011-01 (20°C ext - 7°C int).



- Sensitive efficiency
- Latent efficiency

DIMENSIONS (mm)



Nozzle diameter (D):
- NASHIRA S 150, D = 125 mm
- NASHIRA S 200, D = 160 mm

NASHIRA SPECIFIC ACCESSORIES



SPCM Lite M
 Communications module.



NASHIRA F
 Spare filter kits available:
 G4/G4
 G4/M5
 G4/F7
 G4/F9
 G4/Activated Carbon

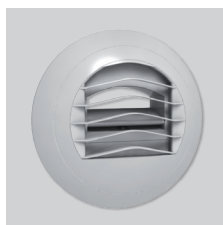


DSI
 Dry ball siphon.



KIT RF NASHIRA
 Radiofrequency remote control.

MOUNTING ACCESSORIES



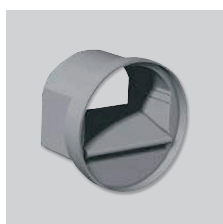
**BARJ
 BARP**
 Auto-adjustable suction inlets.



BDOP
 Supply and extraction inlets.



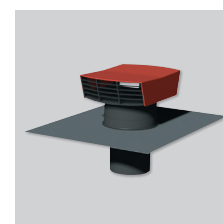
RDR
 Auto-adjustable flow regulators. To be installed inside the duct.



RD BP
 Low-pressure auto-adjustable flow regulators. (20/100 PA)
 To be installed inside the duct.
 80 mm diameter.
 Flow rate: 15 or 30 m³/h.



RD BP SM
 Auto-adjustable flow regulators. To be installed inside the cuff of the BDOP inlets.
 80 mm diameter.
 Flow rate: 15 or 30 m³/h.



CT
 Roof covers.



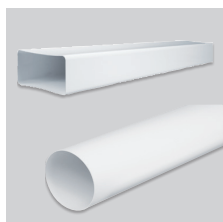
LAF
 Flexible acoustic connections.
 Length: 0.5 and 1 m models.



GPR-ISO
 Rigid insulated ducts.



**GP
 GPX
 GP-PRO
 GP-ISO**
 PVC ducts.



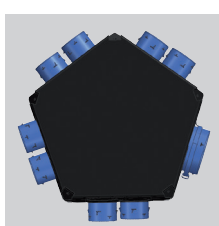
TUBREC
 Rectangular ducts in flame-retardant plastic.



FLEXIREC
 Semi-flexible oblong ducts.



PLENUM UNI PL
 Insulated extraction plenum with discharge
 Ø 125/150-160 mm,
 Equipped with 4 PLUGSK nozzles
 90/75 able to accept up to a total of 8.



PLENUM UNI 8
 Insulated supply plenum with suction
 Ø 125/150-160 mm,
 and up to a maximum of 8 outlets for dry areas (dining room, living room, bedrooms)
 Ø 80 mm.